

# KEITEQ COMPANY LIMITED PROFILE



## INTRODUCTION

### KEITEQ CO., LTD. (THAILAND)

Keiteq group SMEs & affiliates providing one stop manufacturing solution to the global customers with our networks in Thailand & Malaysia.

We providing excellent support and services on:

Product and Mold design,  
Design for Manufacturing proposal,  
Mold flow analysis.

Fabrication of Precision and appearance plastic mold, die cast mold,  
Mold Base, Jig& Fixtures, Mold Parts & Mold Components

We provide technical support in English, Japanese, Thai, Malay, Indonesian, Chinese and Indian languages.

## GROUP MISSION & VISION

### **MISSION:**

WE PROVIDE STRONG TECHNICAL AND QUALITY SUPPORT TO ALL OUR CUSTOMERS TO MEET OUR COMPANY MOTTO OF  
**“SATISFYING OUR CUSTOMER NEEDS IN ALL COST”,**

### **VISION:**

TO MANUFACTURE QUALITY CUSTOMER PLASTIC INJECTION MOLDING PRODUCTS WITH VALUE ADDED SAVING IN A COST EFFECTIVE MANNER AND TO DELIVER YOUR PRODUCTS ON TIME EVERY TIME.

## ABOUT KEITEQ GROUP

### KEITEQ GROUPS

The organizational chart shows 'KEITEQ GROUPS' at the top. A vertical line descends from this box and connects to a horizontal line. From this horizontal line, three vertical lines descend to three separate boxes: 'KEITEQ (THAILAND)' on the left, 'KEITEQ T&P (Thailand)' in the middle, and 'RICHE NICHE (MALAYSIA)' on the right. Additionally, a vertical line descends from the 'KEITEQ (THAILAND)' box to a fourth box, 'KEITEQ JAPAN'.

#### KEITEQ (THAILAND)

Factory 1

PLASTIC MOLD & MOLDING  
MOLD BASE, MOLD DESIGN

#### KEITEQ T&P (Thailand)

Factory 2

INJECTION MOLDING

#### RICHE NICHE (MALAYSIA)

OUTSOURCING MOLD

#### KEITEQ JAPAN

MOLD DESIGN, MARKETING  
& HIGH PRECISION MOLDS

Mold design support by ES Design Co., Ltd. Japan

# HISTORY

2010 Establishment of Keiteq Thailand for mold trading in Thailand.  
ケイテック創立(金型商社)

2012 Establishment of Keiteq Japan for marketing in Japan.  
ケイテック日本創立(金型商社).

2014 Keiteq partnership with Malaysian & Japanese mold makers to set up mold fabrication and molding factory in Thailand.  
ケイテック社内で金型作成.

2016 Technical partnership with ES Design Co., Ltd (Japan) to improve mold design for mass production.  
型設計ES日本



# COMPANY DETAILS

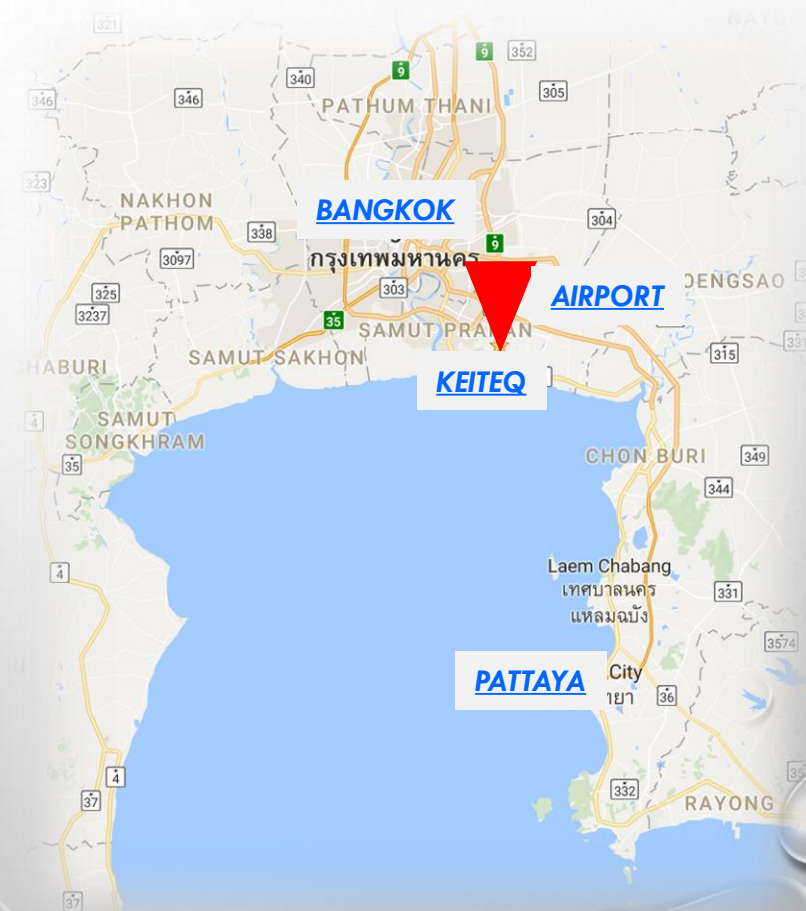
## COMPANY DETAILS

CAPITAL資本金	: THB 10,000,000
ANNUAL SALES 売り上げ(年間)	: THB 50,000,000
MANPOWER需品	: 25
ISO9001	: 2019-2020

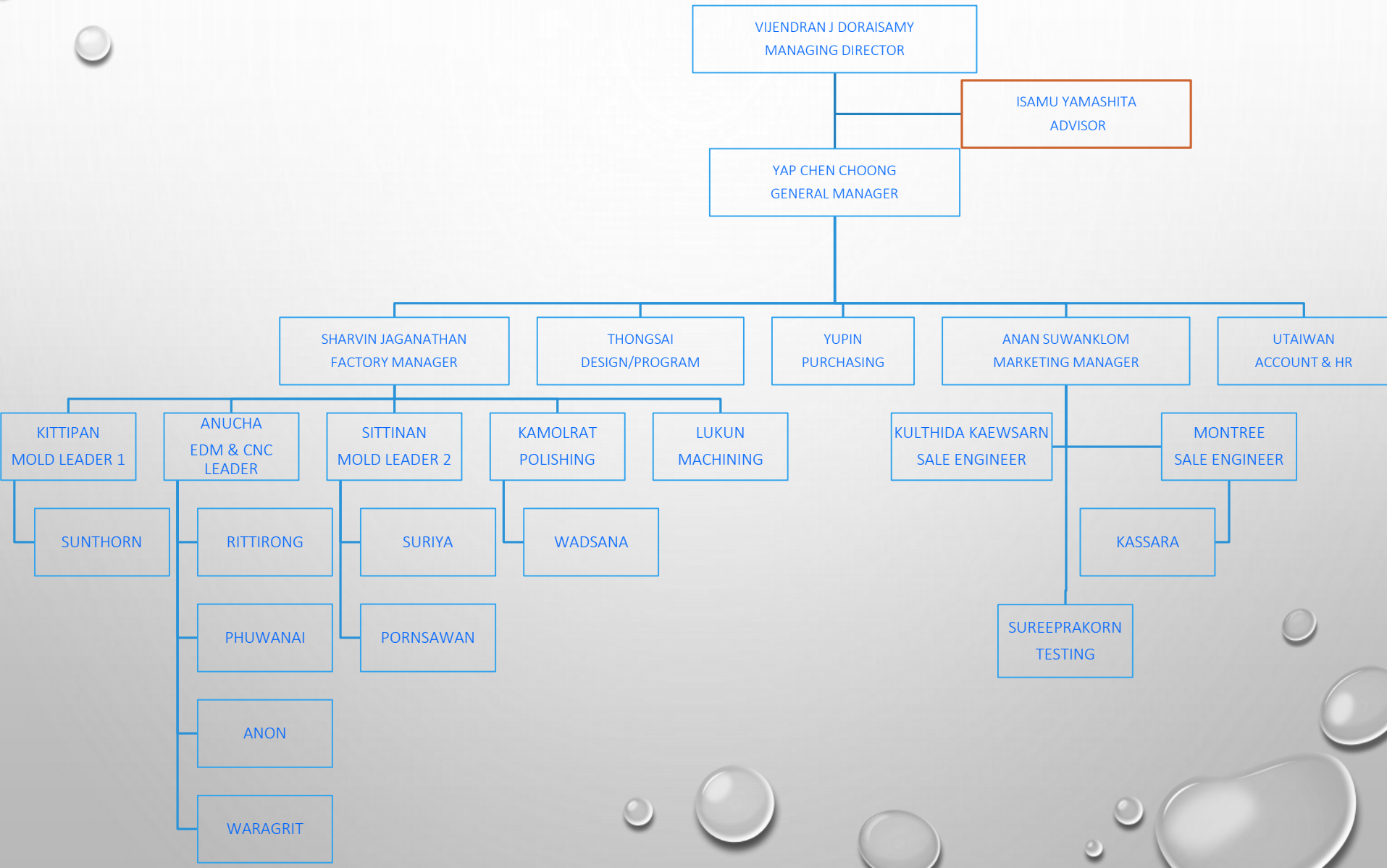
## COMPANY ADDRESS

### KEiTEQ COMPANY LIMITED

888/213 MOO 19 SOI YINGCHAROEN,  
BANGPLEE DAMRU RD., BANGPLEEYAI BANGPLEE  
SAMUTPRAKARN, 10540, THAILAND  
TEL: 02-174-7021 FAX: 02-174-7022  
<https://www.keiteq.org>



# KEITEQ (THAILAND) ORGANISATION



# KEITEQ TOOLING INDUSTRY



Audio, Video



Camera, Cell-phone



Automotive

Automotive



Mold Components



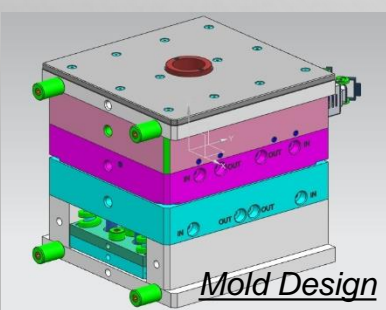
Mold Parts



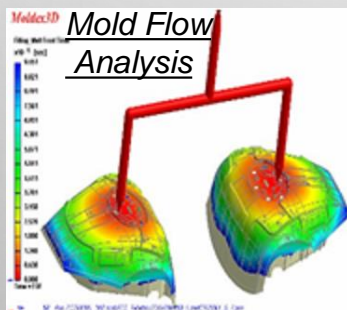
Stamping



Die Casting



Mold Design



Mold Flow Analysis



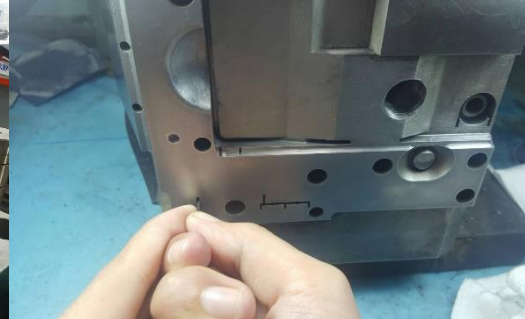
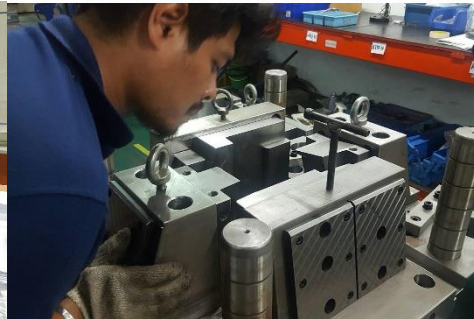
Mold Base



Custom Molds



# MANPOWER LIST



SECTION	INTERNAL (Thailand)	AFFILIATES (Malaysia)
MANAGEMENT	3	5
SALES/MARKETING	2	4
DESIGN	3	10
PROGRAM	2	5
PRODUCTION	15	41
POLISHING	3	17
INJECTION	2	15



# MACHINE LIST



MACHINE	INTERNAL (Thailand)	AFFILIATES (Malaysia)
CNC	3	5
EDM	6	9
MILLING	2	7
GRINDING	3	9
INJECTION	4	18
WIRE CUT	1(ETA Dec 2018)	3
GUN DRILL	Outsource	1
LATHE	1	1
CUTTING MACHINE	2	1
SMARTSCOPE	1	1
VIDEO 3D SCOPE		1





# MEASUREMENT EQUIPMENT LIST

No	Measurement Machine	QTY	Size
1	Non-Contact Scope Measurement Machine	1	300mm x 200mm
2	Height Gauge	2	
3	Digital Vernier	3	150mm – 300mm
4	Caliper	5	150mm – 500mm
5	Micrometer	8	25mm - 125mm
6	Pin Gauge	3 sets	1.00mm - 8.00mm
7	Push & Pull Gauge	1	
8	Micro Scope	1	
9	Filler Gauge	3	

Insert over 20kg measured using EDM machine.



# NEW MACHINE ARRIVAL

**MINI CENTER·MINI PLUS**  
 ■ Best choice to start CNC machining



**SPECIFICATION**

	MINI CENTER	MINI PLUS
<b>TABLE</b>		
Table size	650×300mm	750×400mm
T slot(width×number×distance)	14×3×100mm	14×3×125mm
Max. load	200kg	350kg
<b>TRAVEL</b>		
X/Y/Z Travel	500/300/400mm	600/400/450mm
Spindle nose to table	120-520mm	80-530mm
Spindle center to column	340mm	434mm

CNC machine  
 To measure inserts  
 ETA Sep 2018  
 Table Size: 650 x 300mm



# INJECTION MOLDING MACHINE LIST

No	Size (T)	QTY	Machine Usage	Location	Remarks
1	40	2	MP & Trial	Banglee	Keiteq Factory 2
2	50	1	MP	Banglee	Outsource
3	60	1	MP	Banglee	Outsource
4	80	1	MP & Trial	Banglee	Keiteq Factory 2
5	100	1	MP & Trial	Banglee	Keiteq Factory 2
6	100	1	Trial	Banglee	Keiteq Mold
7	100	2	MP	Banglee	Outsource
8	120	1	MP & Trial	Banglee	Keiteq Factory 2
9	130	1	MP & Trial	Banglee	Keiteq Factory 2
10	150	2	MP	Banglee	Outsource
11	160	1	MP	Banglee	Outsource
12	170	2	MP & Trial	Banglee	Keiteq Factory 2
13	180	1	MP	Banglee	Outsource
14	220	1	Trial	Banglee	Keiteq Mold
15	220	1	MP	Banglee	Outsource
16	250	1	MP	Banglee	Outsource
17	280	1	MP	Banglee	Outsource
18	300	2	MP & Trial	Banglee	Keiteq Factory 2
19	400	1	MP	Banglee	Outsource
20	650	1	MP	Banglee	Outsource
Total Machines		25			



# PLASTIC MOLD PRODUCTS



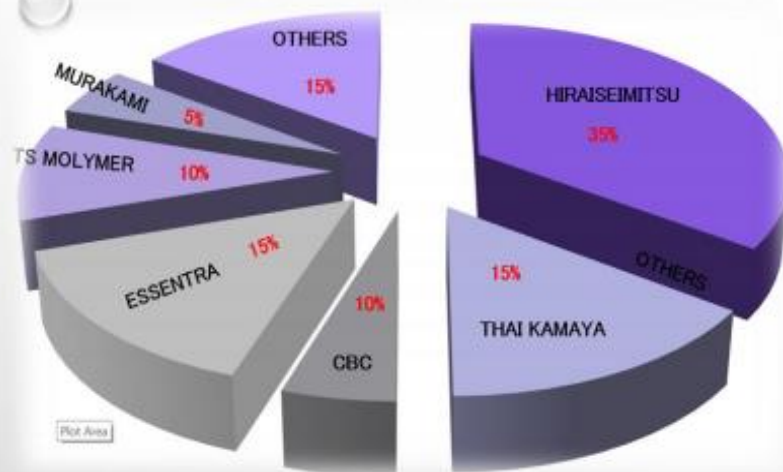
We specialize in both precision and cosmetic molds;

Automotive products, Camera parts, Audio knob & button, Car Dash Board, Car Air Knobs, Printer Parts, Air-con, Air Purifier, Remote Control, Cosmetic Case, Security Locks, Household products & etc.



# STATISTICS

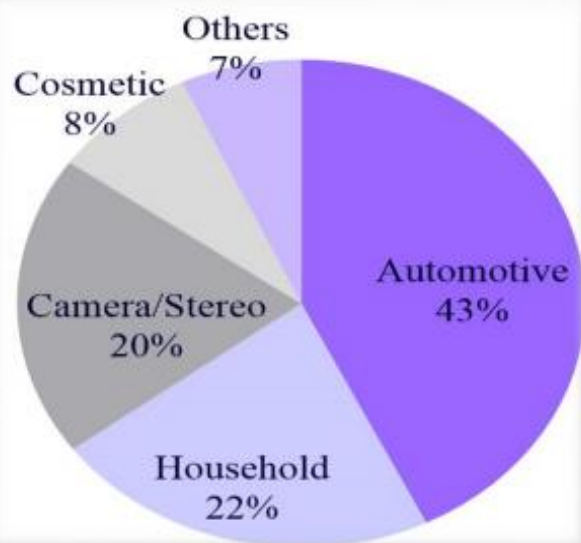
SALES % BY CUSTOMER



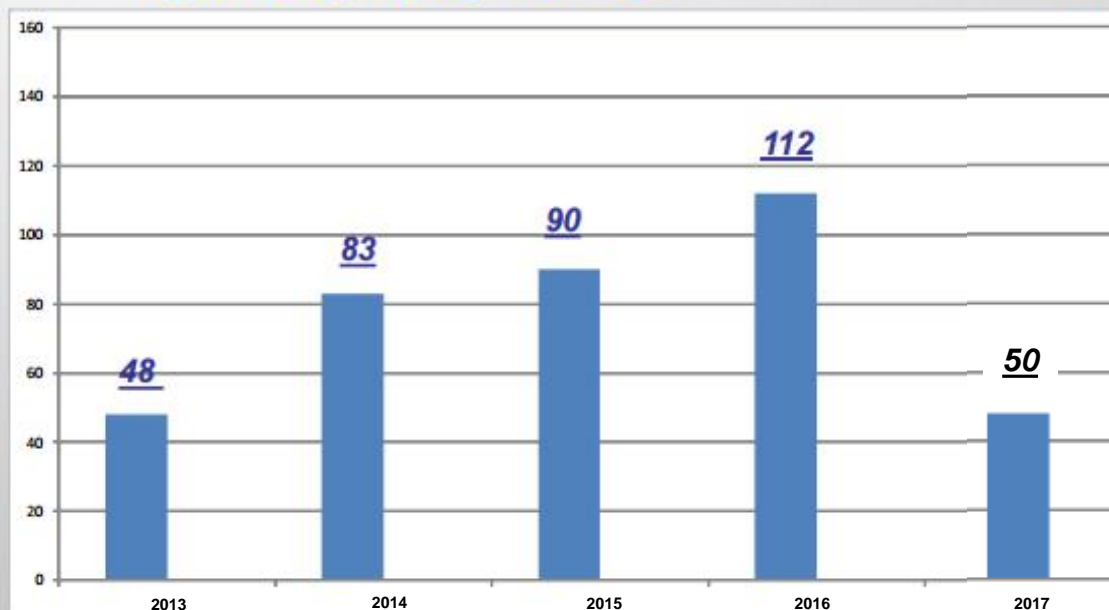
PRODUCTION CAPACITY & MOLD SIZE

COMPANY	LOCATION	CAPACITY / M	MOLD SIZE
KEITEQ	THAILAND	10-15	30T – 450T
AFFILIATES	MALAYSIA /THAI	20 - 35	50T – 850T

SALES % BY CATOGERY



MOLD FABRICATION QTY BY YEAR





## DIRECT CUSTOMERS



**SHARP**



**Pioneer**  
sound. vision. soul



## END USERS

**OLYMPUS**

**FUJITSU TEN**

**Panasonic**  
ideas for life



**SONY**

**HONDA**  
The Power of Dreams

**RICOH**  
magine. change



**TOYOTA**

**Pioneer**  
sound. vision. soul

**CASIO**



**Canon**



# NETWORKING AND RECOGNITION



We are preferred vendors for many Japanese company's in Thailand in mold making. We have very good networking and business relationship building with our customers in Thailand.





CBC INGS (THAILAND) CO., LTD.

## Monthly Evaluation for Supplier (Service)

Month: Jun-18

Company Name:

KEITEQ CO., LTD.

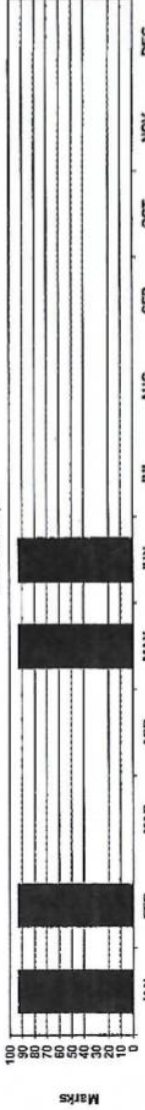
Attn:

K. Jiraporn

Date:

6/Jul/18

Evaluation Graph



Month	JAN	FEB	MAR	APR	MAY	JUN	JUL	AUG	SEP	OCT	NOV	DEC
Target	100.00	100.00	100.00	100.00	100.00	100.00	100.00	100.00	100.00	100.00	100.00	100.00
Score	93.00	93.00	93.00	93.00	93.00	93.00	93.00	93.00	93.00	93.00	93.00	93.00
Grade	A	A	A	A	A	A	A	A	A	A	A	A

Grade	A
Score	93.00

Subject	Month											
	Jan	Feb	Mar	Apr	May	Jun	Jul	Aug	Sep	Oct	Nov	Dec
1. Quality & Delivery Result	60	43.00	44.00	-	-	43.00	44.00	-	-	-	-	-
2. Cost & Co-operation	40	59.00	59.00	-	-	50.00	49.00	-	-	-	-	-
Total Result	100	93.00	94.00	-	-	93.00	93.00	-	-	-	-	-

Detail of Quality & Delivery (User)												
Score	Jan	Feb	Mar	Apr	May	Jun	Jul	Aug	Sep	Oct	Nov	Dec
1. Quality performance (ไม่ล้มเหลว/ไม่ขาดเวลา)												
1.1 คุณภาพของสินค้าและบริการ	20	18.00	-	-	15.00	18.00	-	-	-	-	-	-
1.2 คุณภาพการบริการและการจัดส่ง	10	7.00	-	-	7.00	7.00	-	-	-	-	-	-
2. Delivery/Service on time	20	18.00	18.00	-	18.00	19.00	-	-	-	-	-	-
(การส่งมอบ/บริการตรงเวลา)												
Total score	50	43.00	44.00	-	43.00	44.00	-	-	-	-	-	-

Comment:

Detail of Cost & Co-operation (Purchase)												
Score	Jan	Feb	Mar	Apr	May	Jun	Jul	Aug	Sep	Oct	Nov	Dec
1. Cost (บาท)	25	25.00	-	-	25.00	25.00	-	-	-	-	-	-
2. Co-operation & Quick response (การร่วมบริการ/ตอบสนอง)	15	15.00	-	-	15.00	14.00	-	-	-	-	-	-
3. Service (การบริการ/การงาน)	10	16.00	-	-	16.00	18.00	-	-	-	-	-	-
Total score	50	56.00	-	-	56.00	57.00	-	-	-	-	-	-

Comment:

Remark :  
Evaluation Grade

Score	Grade	Evaluation	Remark
100	A	Excellent	
80-99.9	B	Good	
65-79.9	C	Fair	
Less than 65	D	Poor	

Remark :

Grade "C" 1 time request to need improvement.  
Grade "C" 2 time issue corrective action for improvement.  
Grade "D" Result not pass . cut off AVL and information to supplier or waiting for the decision.

Acknowledgment by vendor	Approved by CBC	Evaluation by CBC

Remark : Please sign and return to CBC within 7 day. After received other wise accept without condition Fax : 038-185305

# TESTIMONIAL/MONTHLY EVALUATION

# KEITEQ